

## Licensing Overview

The OmniAccess ESR products come in a base format and can have various access features added to the base product depending on licensing options. Please refer to the Alcatel-Lucent price list for licensing information.

Once an order is placed the following process occurs:

- An email is generated with the proper URL to obtain the license key.
- A customer ID and order number are entered on the licensing website.
- The available features are identified by the order's line item and the user highlights the license key needed.
- The appropriate serial number is entered and a key is generated.

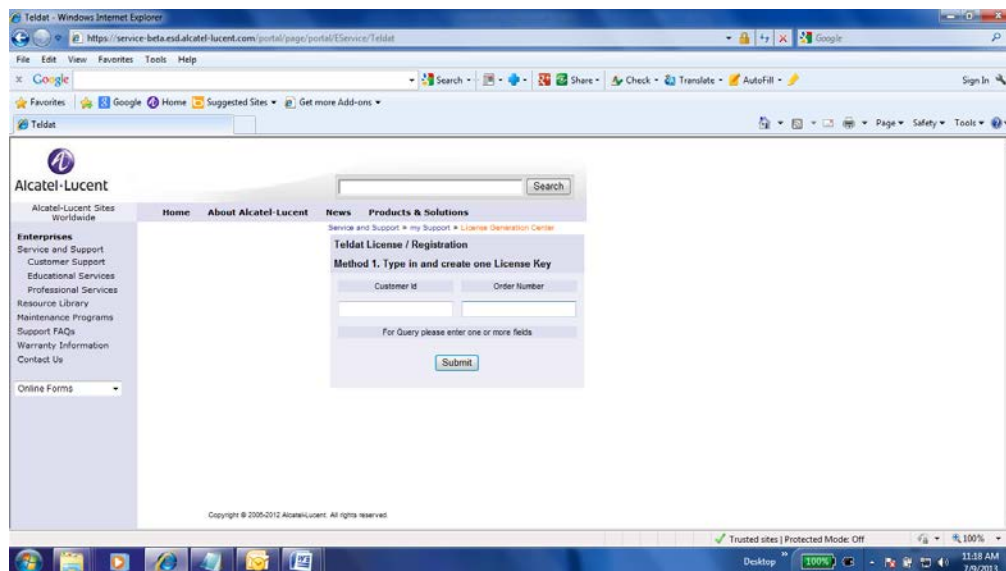
**Note:** All generated keys are cumulative meaning each new key includes all features of the previous key and then replaces the previous key.

**RMAs** - RMAs (replacements) work in a similar manner, the user clicks on the RMA button and enters the old and new serial number. The new serial number will copy over all the features of the prior serial number.

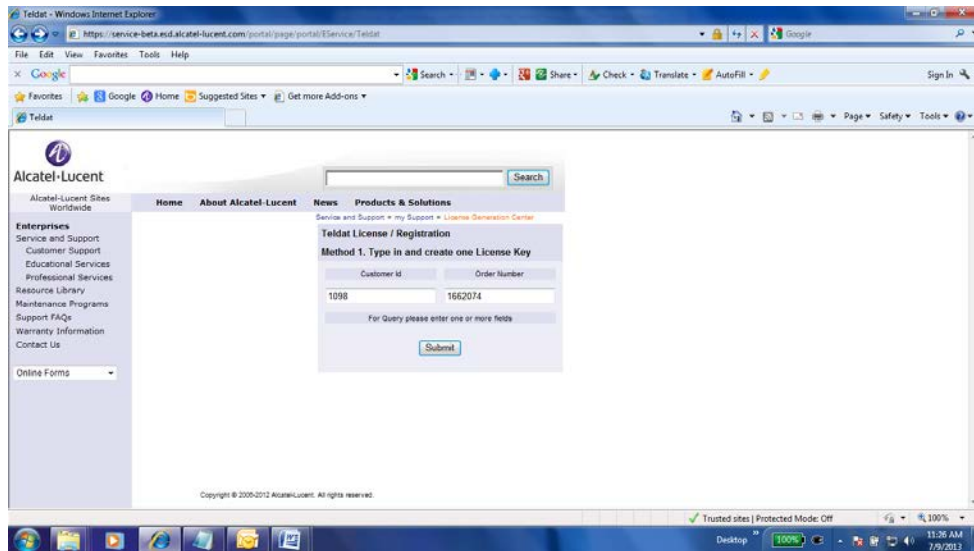
**Reloads** - Reloads a previous key and allows a user to retrieve a key from a unit in case it has been lost.

## Generating Licenses

1. Click on the URL: <https://service.esd.alcatel-lucent.com/portal/page/portal/EService/Teldat>

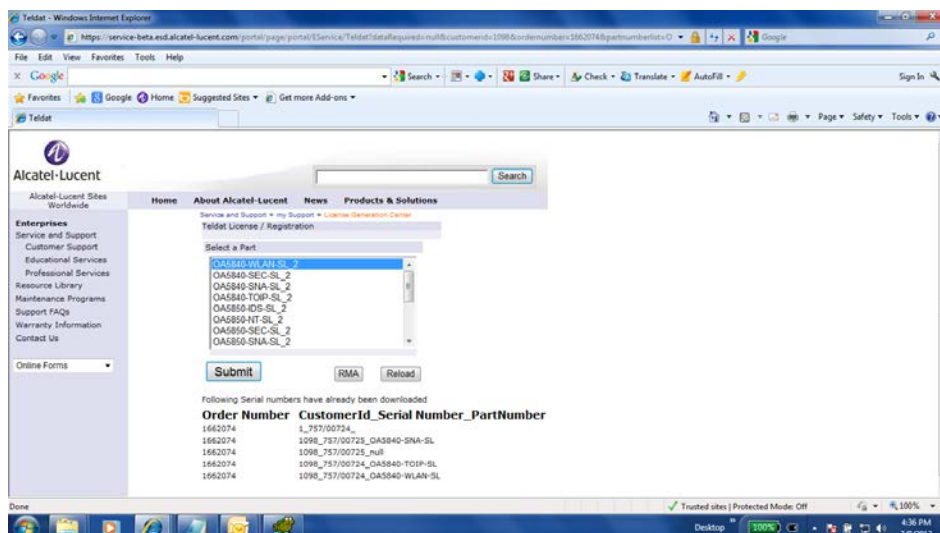


- 1.1. Enter the customer ID (this may be automatically be filled in) and order number. Alternatively, the order number field can be left blank to see a list of all orders for the customer ID. Once the order number has been determined, Click **Submit**.

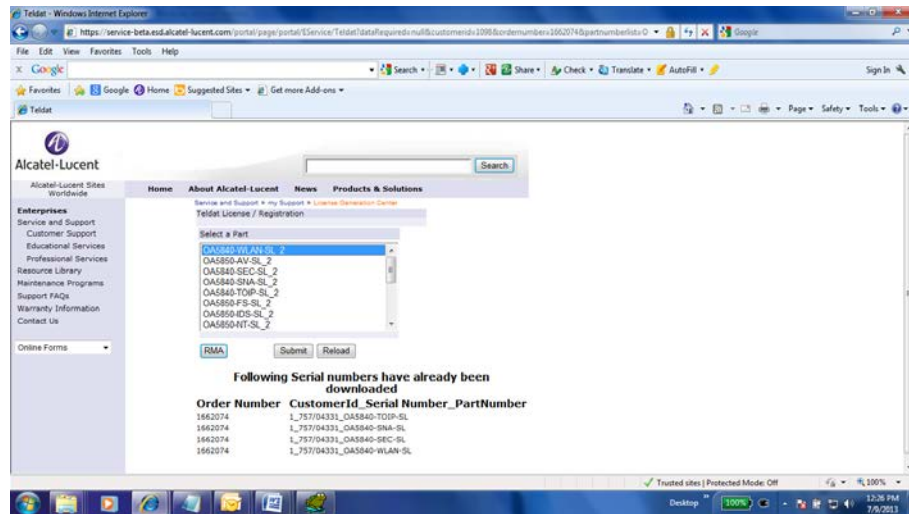


- 1.2. A list all possible feature items with their respective ordered quantities as well as a history of what was ordered for this customer's ID will be displayed. Two additional buttons are also displayed:

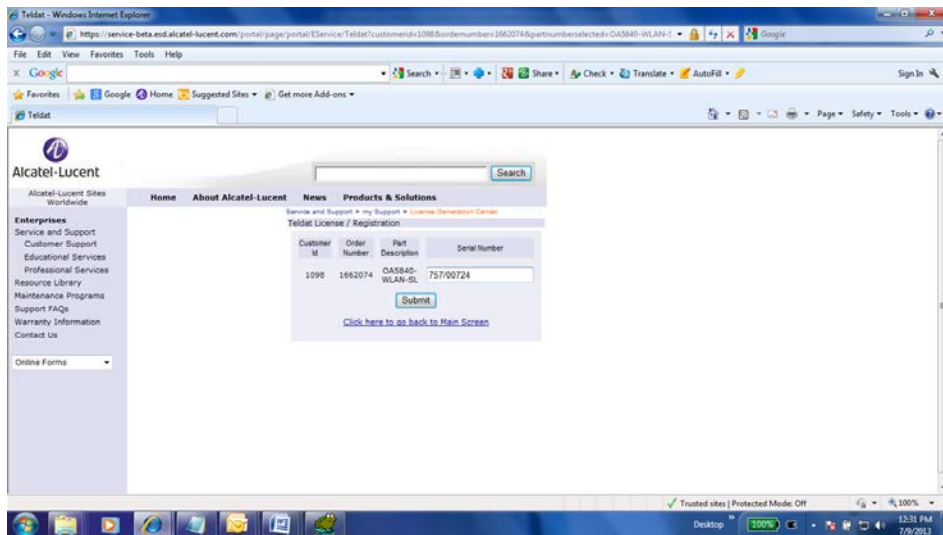
- **RMA** - Allows for re-licensing a replacement unit with the exact same features as the faulty one.
- **RELOAD** - Allows retrieval of a previous license key for a particular serial number.



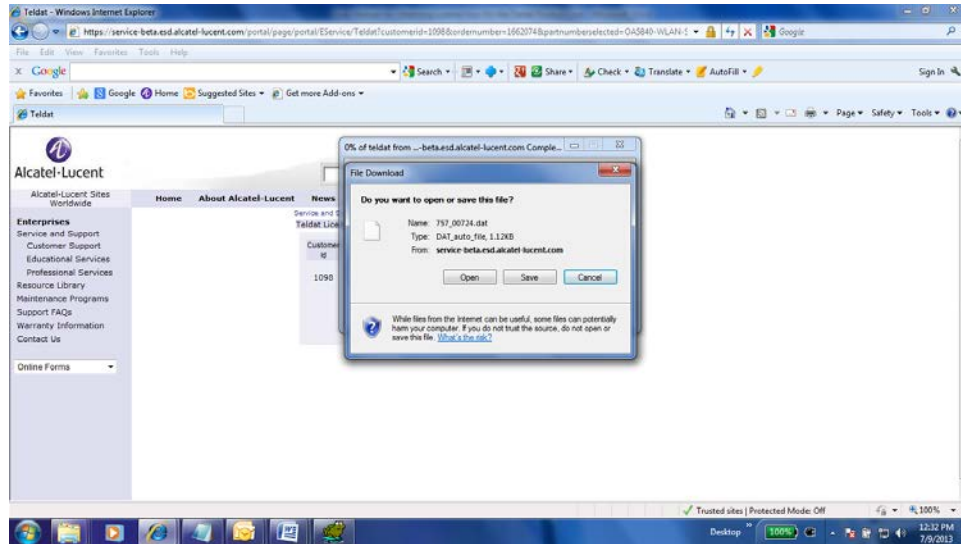
1.3. Highlight the feature needing a license key and click on the **Submit** button.



1.4. Enter the serial number and click on the **Submit** button.



- 1.5. A license key file is generated, save the file. It will be used to install the license on the switch.



## 2. RMA Process (Transfer a license key):

RMAs are failed units that have been replaced by an Advanced Placement unit (AVR). To transfer the prior feature license keys to the new unit click on the **RMA** button and enter the OLD and NEW serial numbers and then click **Submit**. The new license key for the new unit is then generated.

## 3. RELOAD Process (Retrieve a lost license key)

This process allows a prior license key to be retrieved. Please note that this key can only be used on the unit with the same serial number that the key was generated from. Click on the **RELOAD** button and then enter the serial number of the unit to retrieve the license key. Click on **Submit**.

## 4. Error Checks

- 4.1. Customer ID and Order Number must exist in the licensing database.
- 4.2. Serial Numbers are checked to see if the unit has been purchased.
- 4.3. Quantity of licenses is checked to make sure over-issuance of keys doesn't occur.

## 5. Installing the License on the Switch

- 5.1. Connect to the switch's FTP server and configure binary mode using the "bin" command
- 5.2. Transfer the file "put <licence\_file.dat>"
- 5.3. Once the transfer is finished, execute the recording command using "quote site savebuffer"
- 5.4. Restart the device using the "quote site reload on" command
- 5.5. Close the FTP session through the "quit" command (the device will restart after 30 seconds)
- 5.6. Log in to the switch to see the installed licenses.

```
C:\ Select Telnet 10.255.214.4

User: admin
Password: *****

Alcatel-Lucent                (c)2013
Router model OA5840 ESR IPBase-WLAN-SEC-DATA-UC 28 1015 CPU QorIQ Px020 S/N: 75
3 LAN, 1 WLAN, 1 G703 Line, 1 XDSL Line
ESR-OS software version: 10.09.06.01.13 Aug 14 2013 01:58:14

TD04 *_
```

OA-5840 Installed License Example