

Alcatel-Lucent Unified Management Center

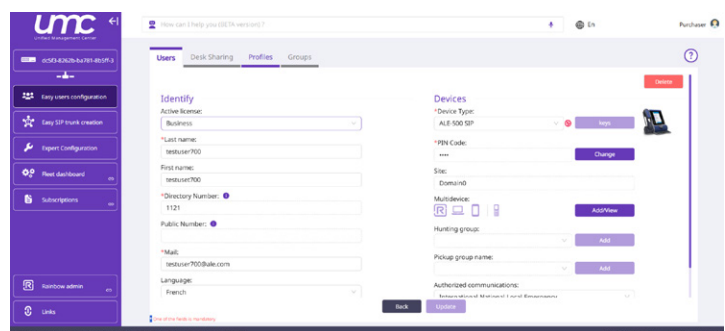
Easy configuration for your next-generation communications solution

The [Alcatel-Lucent Unified Management Center](#) (UMC) is the next-generation cloud-based administration tool for the [Alcatel-Lucent OmniPCX® Enterprise Purple](#) (OXE Purple) business communications solution.

UMC combines ease of use, an intuitive web-based graphical interface, simplified management of users and platform resources and configuration assistance based on Artificial Intelligence (AI).

Hosted in a public cloud located in France, the UMC application is accessible via a compatible web browser from MyPortal or Fleet Dashboard portals provided by ALE. UMC enables the OXE Purple system administrator to manage the essential elements of telephony operation simply and efficiently:

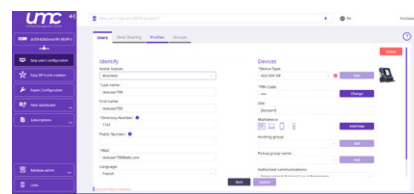
- Manage users and their telephony equipment (deskphone, mobile or softphone)
- Create public network access via SIP trunk to the SIP service provider of your choice
- Use “expert mode” for advanced administration including remote connection to the system and access to all settings
- Configure the solution with AI assistance based on information in ALE technical product documentation



| Features | Benefits |
|---|--|
| Web-based application developed and maintained by ALE in SaaS (Software as a Service) mode | User-friendly web portal, no footprint on the customer or partner side. No maintenance or upgrade to be managed by the administrator. Always up to date with the latest features to handle new hardware and software as part of the ALE communications solution. |
| Easy user management: Manage frequent Move/ Add/ Change/Deletion (MACD), device association, group of users, desk sharing | Visually rich, user-centric management with easy creation thanks to profiles, group member management, desk sharing management, simplification for multi devices (for creation, association, registration, parameters) and phone device management with programmable keys positioning. |
| Easy SIP trunk creation: wizard to create public SIP trunk based on template for each SIP service providers and private SIP trunk for ecosystem | Simplification of public/private SIP trunk creation for OXE Purple. Limited number of parameters to create a public SIP trunk for a list of certified SIP service providers, avoiding configuration issues and inconsistency. |
| Expert configuration mode | Provide remote administrators with secure access to web-based Management of OXE system (equivalent to OXE WBM) without requiring LAN connectivity. |
| AI assistance for configuration | Fast and accurately documented answers to your questions about configuring OXE Purple based on up-to-date information from the manufacturer's official technical documentation and configuration guidance. |
| Secure, cloud-based management at infrastructure and transport levels | Protection against cyber threats and no exposure of sensitive data to the outside world (all traffic is encrypted). Strong authentication and role-based access control for administrators. |

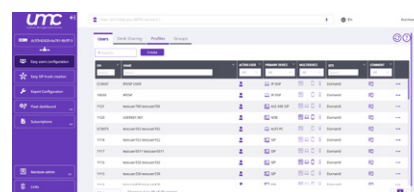
Web-based visual configuration for OXE systems

Intuitive web-based graphical user interface compliant with the latest standards for ergonomics and ease of use. Compatible with the latest version of common web browsers (Google Chrome, Firefox and Microsoft Edge). All UMC actions carried out by the administrator are logged, and the audit trail is accessible via the administration web interface.



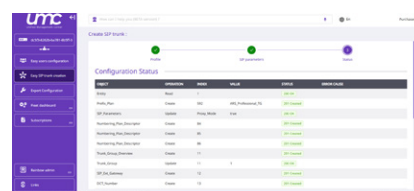
Easy user management

User-centric management makes it easy to manage multiple devices (phones, softphones). Predefined and customized profiles let you quickly create a new user with very few parameters. Configuration of the user's associated phone is facilitated by a visual approach to multidevice management and key programming (available soon). Easy way to view members of both hunting and pickup groups (available soon).



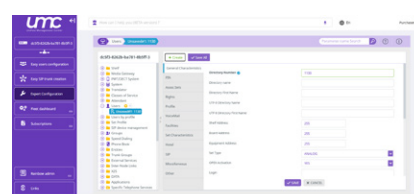
Easy SIP trunk management

A wizard allows you to automatically manage up to 80 parameters in the background thanks to predefined SIP trunk profiles, avoiding errors and inconsistencies. After creation, all impacted and modified SIP parameters can be viewed in the logs. This applies to both public SIP trunks (with certified SIP service providers for OXE Purple) and private SIP trunks for the ecosystem (such as the Rainbow™ by Alcatel-Lucent Enterprise WebRTC Gateway).



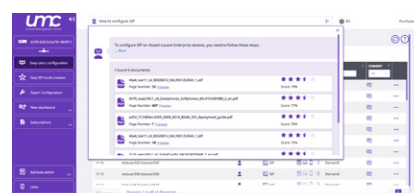
Expert mode configuration

Remote configuration of an OXE Purple system is facilitated by secure web access for management (equivalent to OXE WBM) without the need for LAN connectivity. The connection uses a secure link based on Web Secured Socket (WSS) over the internet between the agent integrated into the OXE Purple system on the customer's LAN and the cloud service operated by ALE.



AI assistance for configuration

A conversational, AI-driven assistant (based on text and/or speech-to-text) is available to help the administrator with questions relating to OXE Purple configuration. This assistant draws on the comprehensive technical documentation base maintained by technical experts from ALE. Users of the wizard can rate the level of accuracy of the answers in the interests of continuous service improvement (available soon).



Technical specifications

Browser compatibility

- Google Chrome, Firefox, Windows Edge

Data center hosting (for cloud-based services)

- OVH in France

Connection prerequisites

- OXE Purple from R101.0-MD3
- Connected OXE system based on Cloud Connect Operation (CCO)

Security

- HTTPS and Permanent Web Socket connection with TLS 1.2
- Role-based access control (via MyPortal credentials and OXE accounts credentials)

AI assistance

- Help online
- Retrieval-Augmented Generation (RAG) based on ALE technical documentation
- Data confidentiality (no external exposure)

Languages

- English
- French, German, Spanish (available soon)

Provisioning level

- Focus on mid-sized OXE Purple systems with UMC R1.0

Licensing information

UMC is free of charge and can be used by ALE Business Partners to configure OmniPCX Enterprise Purple systems under the following conditions:

- OmniPCX Enterprise Purple systems from **release R101.0-MD3**
- OXE system with **a valid SPS contract** or in the context of a **Purple on Demand subscription**